

FEATURES  
GUIDE  
RIVER  
COLLECTION










# DATA SHEET RIVER COLLECTION

- Bovine hides
  - Origin: European
  - Average size: 4.80/5.00 m<sup>2</sup>
  - Thickness: 1.0-1.1 mm
  - Embossed grain
- Peaux des Bovins
  - Origine: Européen
  - Superficie moyenne: 4.80/5.00 m<sup>2</sup>
  - Epaisseur: 1.0-1.1 mm
  - Grain estampé
- Cueros de Bovinos
  - Origen: Europeo
  - Tamaño promedio: 4.80/5.00 m<sup>2</sup>
  - Espesor: 1.0-1.1 mm
  - Grano en relieve

• Available in 18 colours	• Disponible en 18 couleurs	• Disponible en 18 colores
Bovine of European origin, corrected and embossed for enhanced grain consistency Finished using water based system This product has a pigmented and protective top coat, with a soft handle and a silky matte finish	Bovins d'origine Européenne corrigé et gaufré pour améliorer la consistance du grain Fini en utilisant un système à base d'eau Le produit a une couche supérieure pigmentée et protectrice, avec une poignée souple et un fini mat soyeux	Bovinos de origen Europeo, corregido y repujado para aumentar la consistencia del grano Acabado utilizando un sistema basado en agua Este producto tiene una capa superior de protección pigmentada, con un mango suave y un acabado mate sedoso

Differences of colour from lot to lot are to be considered normal.	Differences de couleur d'a lot a doivent etre consideres comme normaux.	Diferencias de color de lote a lote son para considerarse normal.
APPLICATION UPHOLSTERY	APLICACION TAPICERIE D'AMEUBLEMENT	APLICACION TAPICERIA

## PHYSICAL AND COLOUR FASTNESS CHARACTERISTICS PHYSIQUE ET LES CARACTERISTIQUES DE SOLIDITE DES COULEURS CARACTERÍSTICAS FÍSICAS Y DE SOLIDEZ DEL COLOR

	Dry rubbing Frottement sec Frotamiento seco	500 Cycles   Cycles   Ciclos	UNI EN ISO 11640	>4 Grey scale Échelle de gris Escala de Grises
	Wet rubbing Mouiller à friction Frotamiento mojado	150 Cycles   Cycles   Ciclos	UNI EN ISO 11640	>4 Grey scale Échelle de gris Escala de Grises
	Flexing eundurance Flexion des eundurance Resistencia flexion	30,000 Cycles   Cycles   Ciclos	UNI EN ISO 5402	No surface damage or cracks Aucun dommage superficiel ou fissure Sin daños en la superficie o grietas
	Colour fastness to light Solidité des teintures à la lumière Solidez del color a la luz		UNI EN ISO 105-B02	> 3/4 Blue scale Échelle de bleu Escala de Azu
	Tear resistance Résistance de larme Resistencia al desgorro		UNI EN ISO 3377-1	> 20 Newton
	Fire Resistance Résistance au feu Resistencia al fuego		UNI EN 1021/1 UNI EN 1021/2	BS5852 Source   Fuente 0.1



# LEATHER CARE INSTRUCTIONS CLASSIC COLLECTION

## **Protect against excessive sunlight, dryness and heat:**

Sunlight will fade and dry out the leather.

Dryness will cause the leather to crack.

Heat will dry out the leather and cause further damage.

## **How to remove spots and stains:**

Blot excess liquid up as quickly as possible with a clean microfibre cloth.

If necessary, use clean lukewarm water only and let dry naturally. Do not dry with hair dryer, etc.

If water is used, clean the entire area where spot occurred seat cushion, arm, etc.

## **DO NOT RUB.**

## **How to remove butter, oil or grease:**

Wipe excess butter, oil or grease off the leather with a clean microfibre cloth. Then leave it alone as the spot should dissipate as much as possible into the leather in a short period of time.

**Do not apply** water or try to wash the butter, oil or grease spot.

## **How to remove chewing gum:**

Place ice cubes in a plastic bag and apply on the chewing gum. Wait several minutes, lift the ice bag and remove the chewing gum.

## **General Care**

**DO NOT USE CHEMICALS, SADDLE SOAP, CLEANING SOLVENTS, FURNITURE POLISH, OILS, VARNISH, ABRASIVE CLEANERS, SOAP OR AMMONIA WATER.**

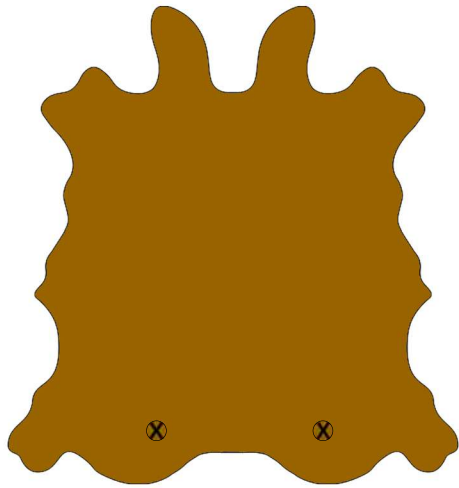
**For further informations, contact AMS.**

These are recommended or suggested methods of cleaning. The manufacturer is not responsible for damage incurred while cleaning. Always try the cleaning method in a hidden area first to see results.

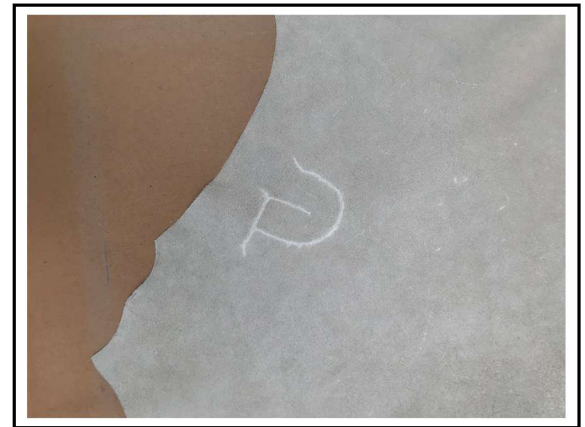


## PRODUCT FEATURES AND IMPERFECTIONS THAT MAY OCCUR

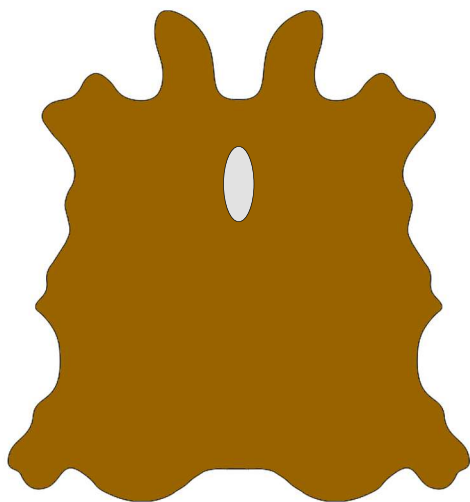
### IRON BRANDING



Hot and freeze branding is a technique for marking cattle to help identify the owner. However this is a decline technique because the alternatives, such as ear tags and even microchip collars are on the rise.



### NECK HOLES



This is a narrow hole or slit along the spine in leather hides typically 15 - 25 centimeters long. The hole is a result of a large hump on the back of the neck among certain breeds that must be removed during tanning.

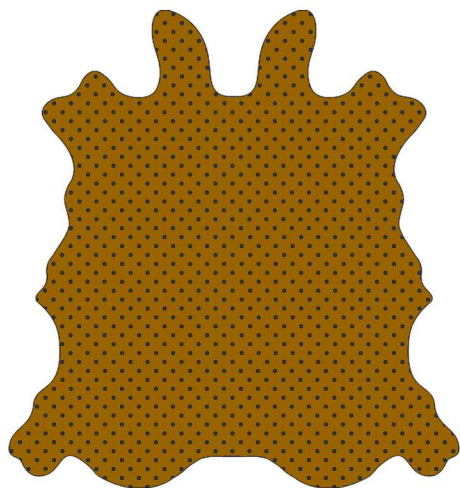


Note: Although every effort is made to ensure that the leather ordered match the colours from our catalogues, slight variations may occur from batch. We advise to always make a sample request from the colour you may need.



## PRODUCT FEATURES AND IMPERFECTIONS THAT MAY OCCUR

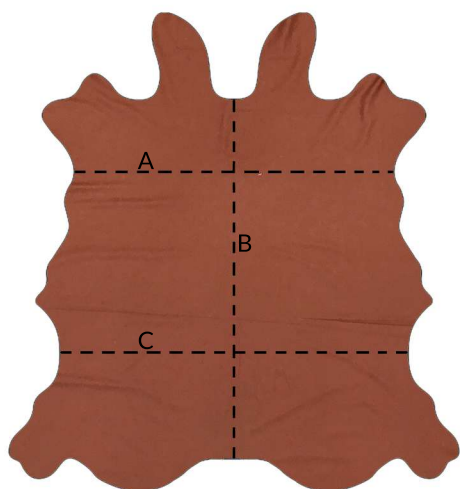
### REGULAR GRAIN



Bovine of european origin, corrected and embossed for enhanced grain consistency.



### MEASURES



The average size of a hide in River collection is 4.80 M2.

A - 1.60 MT (+/-)

B - 2.00 MT (+/-)

C - 1.80 MT (+/-)

Note: Although every effort is made to ensure that the leather ordered match the colours from our catalogues, slight variations may occur from batch. We advise to always make an sample request from the colour you may need.